

*Improving lives
by supporting
choices of people
through community
partnerships and
quality services.*

2023 Annual Report



the
PIONEER CENTER
Ross County Board of DD

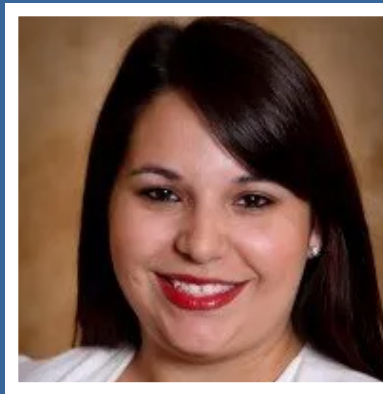
2023 Board of Directors



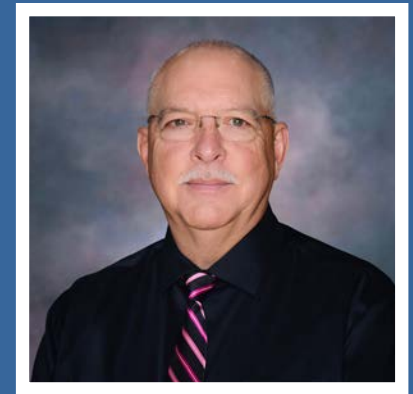
Mike Thompson, President



Bob "Army" Armstrong, VP



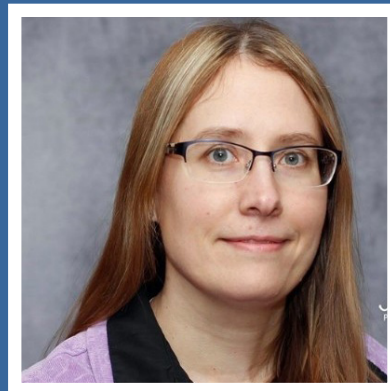
Baylee Butler, Secretary



Dan Riddle



Amy Beam



Katie Guba



Mike Wilbanks



Hunter Robinson

A Message from Superintendent Beeler

The past year has been full of many successes for the Ross County Board of Developmental Disabilities and the people we serve. Throughout 2023, we continued our commitment to quality services, designed to help people live full lives and achieve the goals they choose. I am especially proud of the focus we have had over the last year on strengthening our community partnerships, promoting inclusion and supporting advocacy. Some key achievements I'd like to highlight include:

- We revived our local Employment First Council.
- We hired five advocates to form an Advocacy Advisory Board and revitalize our local advocacy efforts.
- We swore in our first board member with a developmental disability.
- We grew our Special Olympics program to more than 70 athletes participating in 9 sports.
- We increased access to remote supports

and assistive technology by adopting the Tech First policy.

- We partnered with many school districts and youth organizations to offer a variety of inclusive activities.
- We provided Good Life training to providers and staff completed the trauma cohort training.
- We continued support for the DSP Sustainability Program and High Five Committee to celebrate and retain quality providers in our county.
- We started advocacy groups in our area high schools to ensure that advocacy education begins at school-age.
- We provided opportunities & support that allowed individuals to volunteer and be a part of their community.

In 2024, we look forward to making more progress towards our vision and strategic plan goals. Our 2024 annual action plan focuses on continuing our efforts to promote self-advocacy, increasing employment opportunities for individuals with disabilities, strengthening our connections in the community to serve multi-system youth, supporting technology & remote supports and celebrating the work and achievements of our employees and partners.

Sincerely,

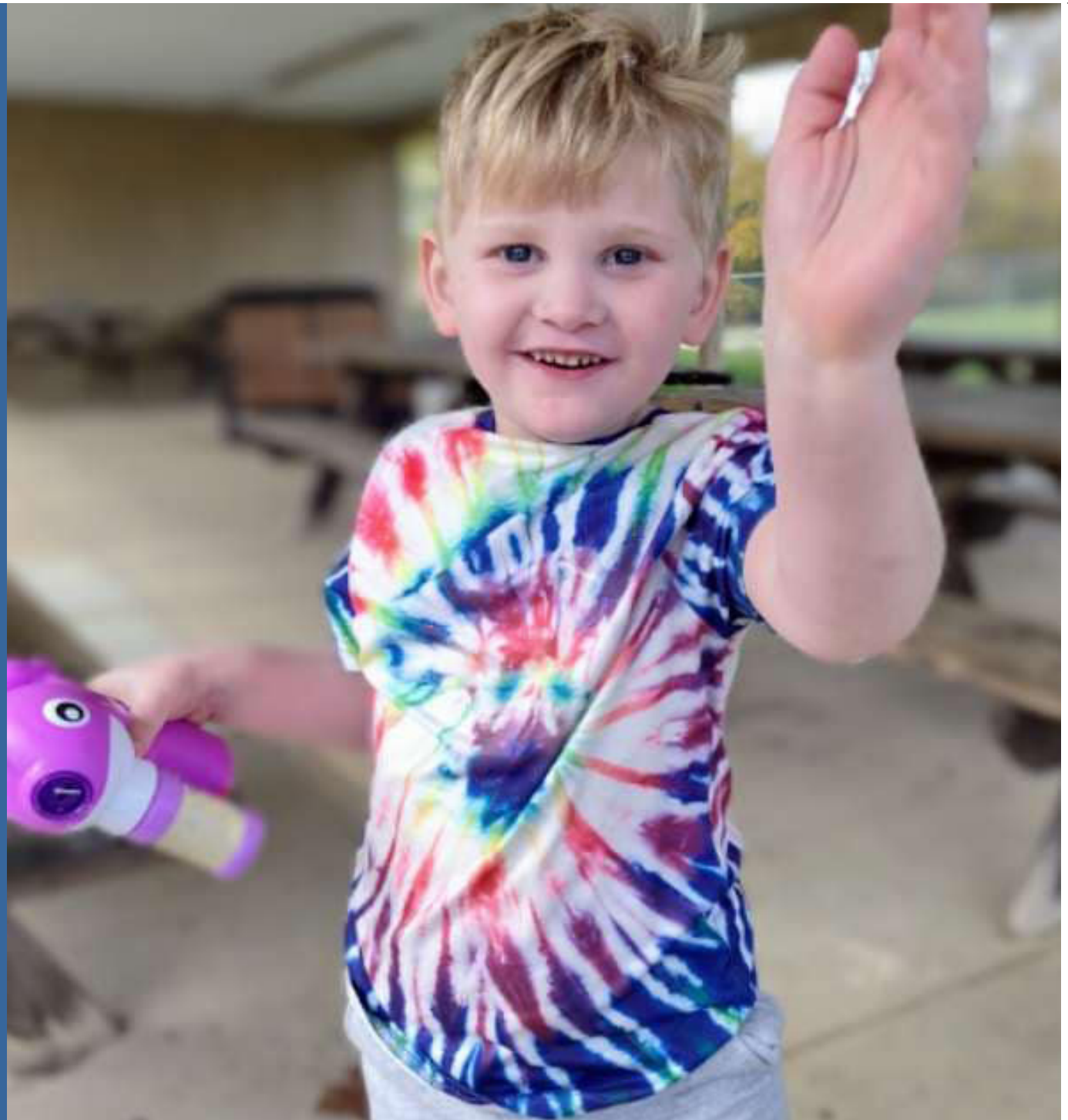


Amy Beeler



About Pioneer Center

The Ross County Board of DD exists for the purpose of improving the quality of life for our citizens who have a developmental disability. We are committed to provide quality services that provide individuals and their families with choices that enhance community participation and achieve a life of increasing capabilities.



Our Mission, Purpose and Philosophy

Our Mission

Improving lives by supporting choices of people through community partnerships and quality services.

Our Purpose

To improve the quality of life for individuals with developmental disabilities.

Our Philosophy

The mission of the Ross County Board of DD is promoted through the following principles:

- The Board recognizes that all individuals desire and deserve the opportunity to make decisions about their lives.
- Person-centered planning is a process they enables people with developmental disabilities and their families to communicate their wants and needs to us so that the Board can arrange the supports they need for a quality life.
- Service coordination is a process of assisting individuals and their families to identify and acquire the appropriate service and supports they choose for themselves within the resources available.
- The Dignity and self-worth of each individual shall be respected.
- Service and supports shall be personalized and age appropriate.
- Services for individuals with developmental disabilities should be close to their homes and families.

2023 Programs and Services Overview

Early Intervention (EI)

The EI program provides services to infants and toddlers under the age of three who have a qualifying medical diagnosis or developmental delays. These services include evaluations, parent coaching and community playgroups/events. Each infant/toddler also has access to an EI team which includes developmental specialists, speech-language pathologists, physical and occupational therapists, and more.

Pioneer Preschool

The Pioneer preschool program is located in the Mt. Logan Community Center. The preschool program includes two special education classrooms taught by licensed Intervention Specialists. Preschool students also receive physical, occupational, speech,

and music therapy services.

Pioneer School

The Pioneer School is where students with disabilities receive specialized instruction from intervention specialists in small size classrooms. Pioneer School students have access to nursing, physical, occupational, speech and music therapy services based on their individualized needs.

Educational Supports

We also have additional satellite classrooms, partnerships with the local Educational Service Center to provide vision and hearing services, and a Behavior Support Coordinator to provide supports to students within their home school districts. These steps expand options for our students and families.

Service & Support Administration

Service & Support Administrators (SSAs) provide case management services for individuals in need of service coordination. SSAs complete a person-centered planning process to identify an individual's wants and needs and what is important to the individual. Once identified, SSAs coordinate the needed services and supports. These services may include residential supports, nursing, employment services, transportation, housing, assistance with maintaining benefits, and emergency assistance for health and safety needs.

Health and Respite

Health and respite funds are used to assist families with adaptive equipment, home modifications, therapy services, or other



supports needed to care for the person with disabilities. Respite care is temporary care provided to a person with a disability because their caregiver is unable to provide care or to provide them a temporary break.

Families can access health and respite dollars to help do many things: attend camps, participate in specialized swimming lessons, and receive additional therapies.

Waiver Administration

The county board assists individuals in accessing a variety of Medicaid waiver programs. These waivers allow individuals to receive supports in the community rather than an institutional setting. The county board authorizes services and pays for approximately 40% of waiver services which are provided by certified individual and agency providers.

Residential Supports

Individuals with developmental disabilities receive support to live in the community as independently as possible. Supports include home modifications, adaptive/assistive equipment, and certified provider assistance with daily living skills such as bathing and personal care, medication administration and household chore assistance. The county board authorizes these services using local Supported Living funds or assisting the individual to enroll on a Medicaid waiver.

Employment Services

Representatives from the county board provide employment navigation support and resources for employers to increase the number of individuals employed in our community.

Provider Recruitment

Over the last year we've been working on creating a robust provider pool of qualified providers to meet the individuals needs through our Medicaid waiver programs. Serving over 300 individuals, our providers work in a variety of settings—weekly drop in, after school services, weekends and homes that require 24 hour support. We are looking into technology to help meet individuals needs, having remote supports that reduces having a staff person in the home while allowing the individual to have increased independence. Using technology to support individuals will allow us to direct in-person providers to the locations that need them most.

2023 Programs and Services Overview (cont'd)

Adult Day Supports

Adult day supports are provided by our agency partners. These supports are provided to encourage participation in community activities, build community membership, develop and maintain meaningful relationships, and offer opportunities for personal growth, independence, and natural supports. Supports are provided based on the needs identified in an individual's service plan. These services are funded by the county board and Medicaid.





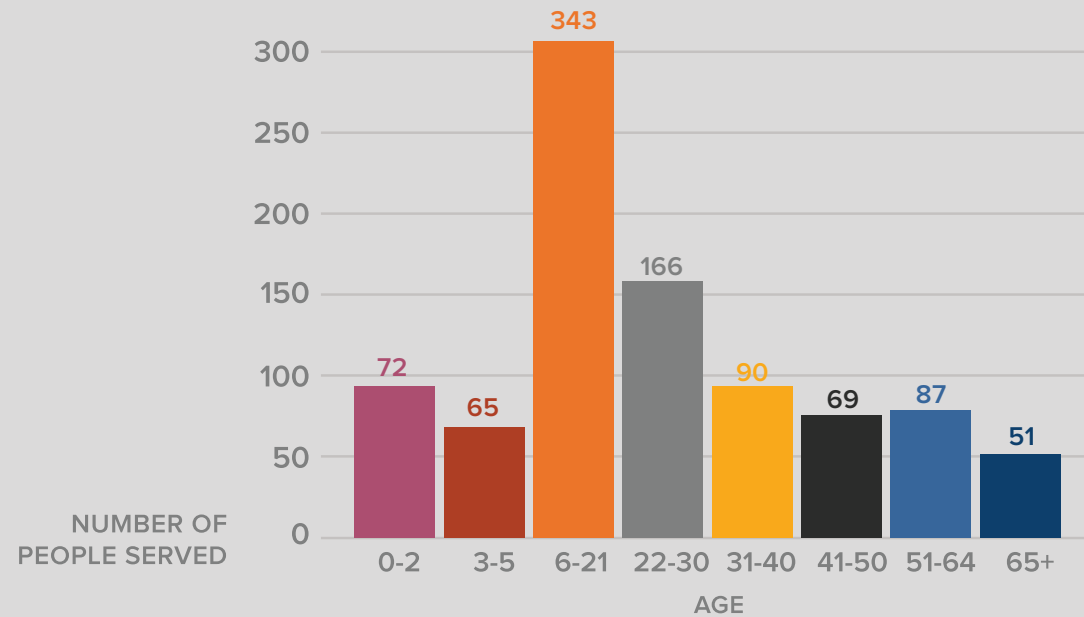
Pioneer Center enjoys being involved with inclusive activities. This year, a group of school-age children attended the first Inclusive Sports Camp, which partnered the children with athletes and coaches from area high schools and youth organizations.



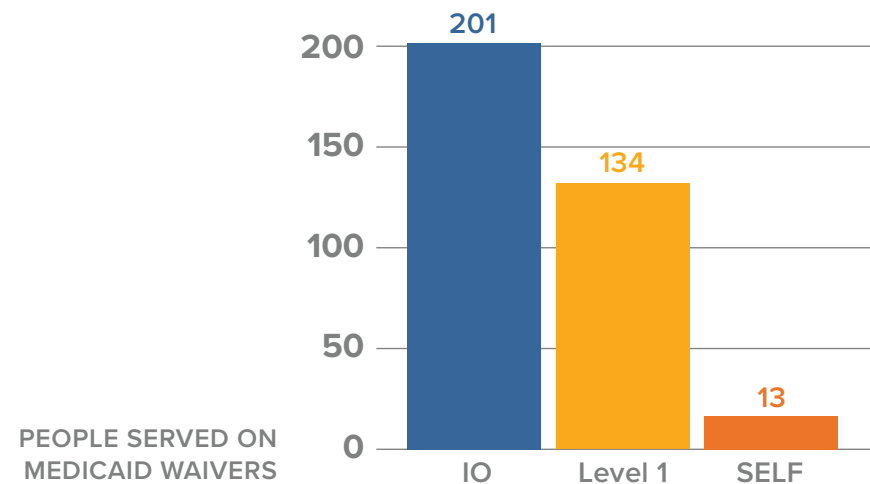
Enrollment Overview

The Ross County Board of Developmental Disabilities currently serves

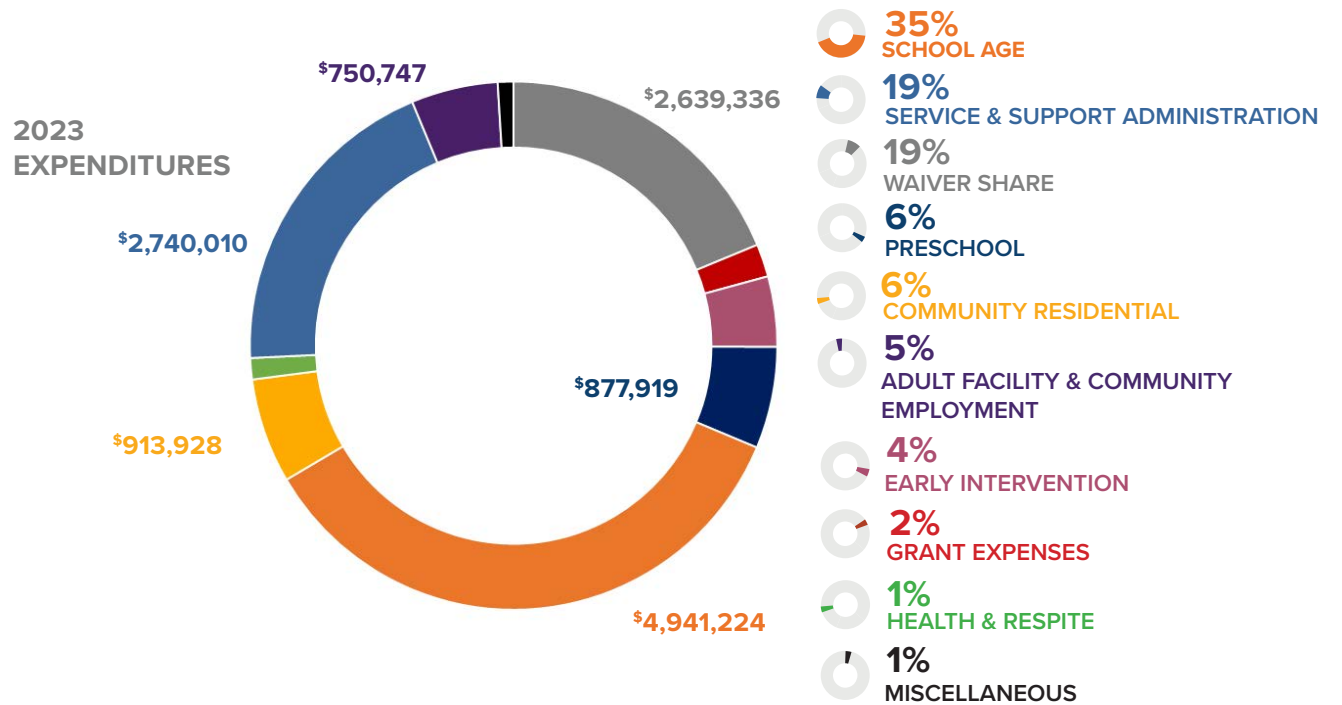
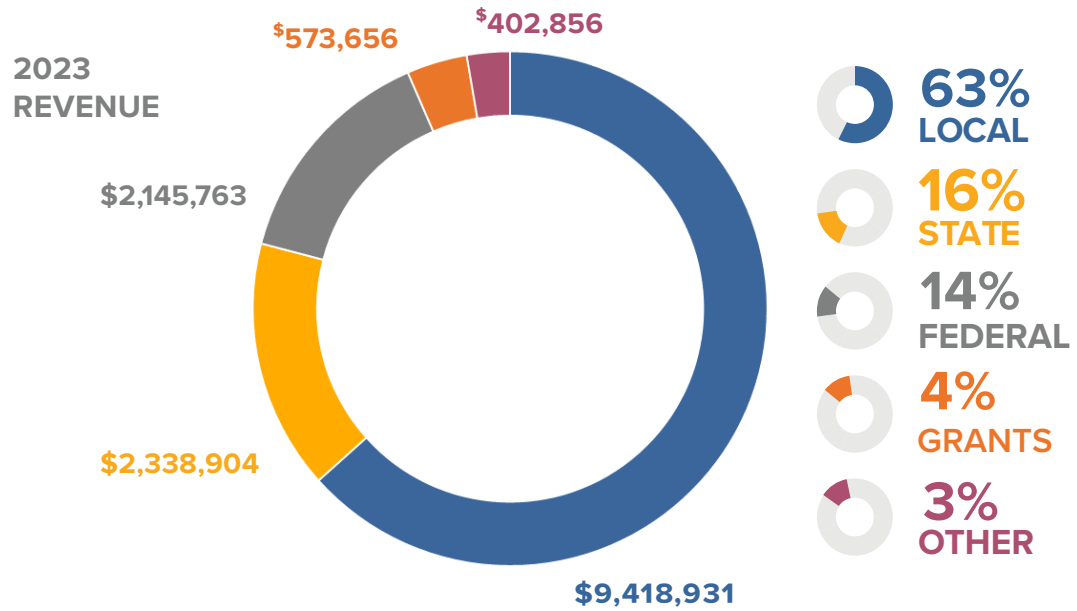
871 citizens with developmental disabilities.



Medicaid waivers allow people to receive long-term care in the community instead of an institutional setting. The county board authorizes waiver services and pays approximately 40% while the federal match 60%. The services are then provided by local providers certified through the Ohio Department of Developmental Disabilities.



Financial Overview





www.rossdd.org

the
PIONEER CENTER
Ross County Board of DD

