



2024

Annual Report

Improving lives by supporting choices of people through community partnerships and quality services.

2024 Board of Directors



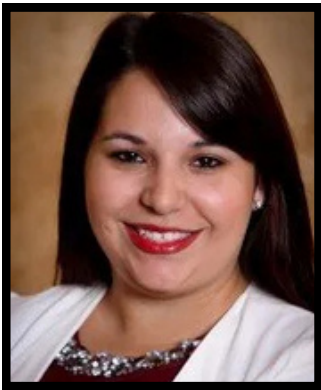
Mike Thompson
President



Mike Wilbanks
Vice President



Katie Guba
Secretary



Baylee Butler



Amy Beam



Dan Riddle



Hunter Robinson

Message from Superintendent Beeler

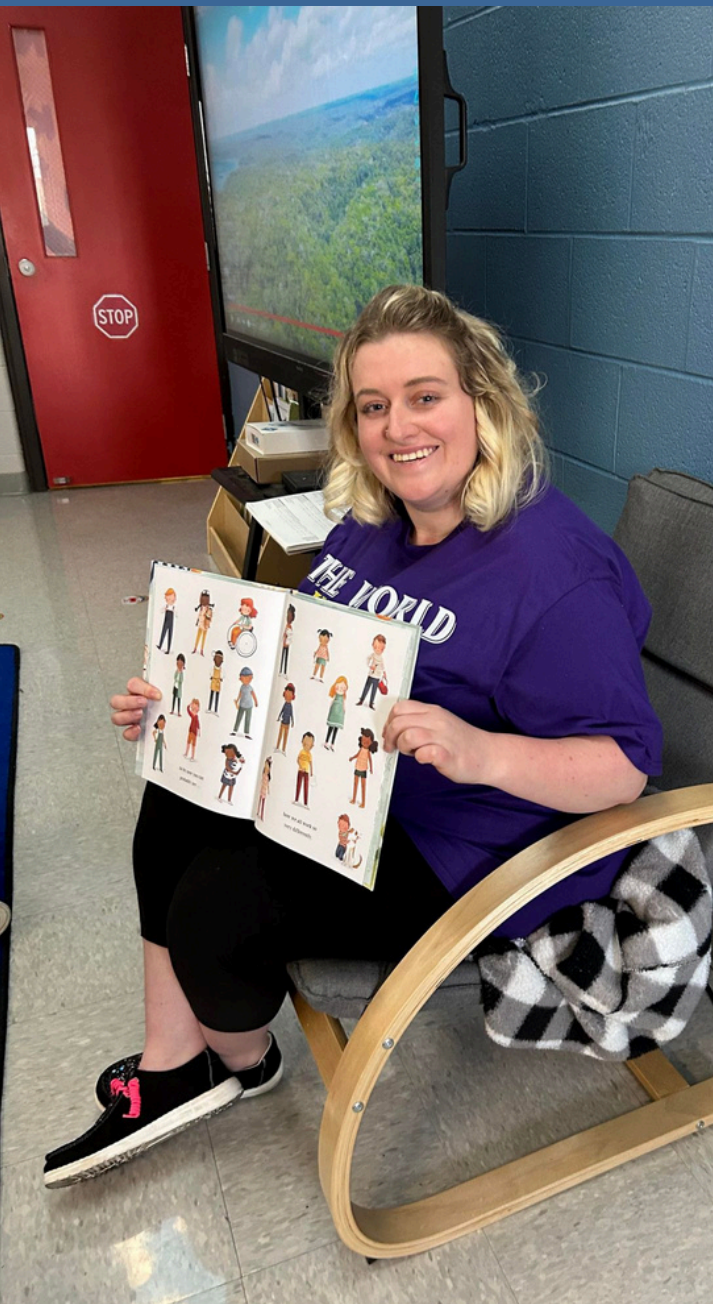
The Ross County Board of Developmental Disabilities is incredibly proud of the achievements of our individuals and staff in 2024. With a continued commitment to quality services and partnerships, we expanded advocacy and services for youth, engaged with parents, providers and community organizations and prioritized long term financial stability.

With the formation of a new Strategic Plan, we enter 2025 inspired and committed to providing quality services to the people in Ross County. We are focused on furthering community inclusion, collaborating with community organizations, expanding access to technology solutions and building a highly qualified workforce. We are honored to serve the people of Ross County in the years to come!



About Pioneer Center

The Ross County Board of DD exists for the purpose of improving the quality of life for our citizens who have a developmental disability. We are committed to providing quality services that give individuals and their families choices that enhance community participation and the ability to achieve a life of increasing capabilities.



Our Philosophy

- The Board recognizes that all individuals desire and deserve the opportunity to make decisions about their lives.
- Person-centered planning is a process that enables people with developmental disabilities and their families to communicate their wants and needs to us so that the Board can arrange the supports they need for a quality life.
- Service coordination is a process of assisting individuals and their families to identify and acquire the appropriate services and supports they choose for themselves within the resources available.
- The dignity and self worth of each individual shall be respected.
- Services and supports should be personalized and age appropriate.
- Services for individuals with developmental disabilities should be close to their homes and families.

PROGRAMS & SERVICES

Early Intervention

The EI program provides services to infants and toddlers under the age of three who have a qualifying medical diagnosis or developmental delays. These services include evaluations, parent coaching and community playgroups/events. Each infant/toddler also has access to an EI team which includes developmental specialists, speech-language pathologists, physical and occupational therapists, and more.

Pioneer Preschool

The Pioneer preschool program is located at Chillicothe STEM Preschool. The program includes two special education classrooms taught by licensed Intervention Specialists. Preschool students also receive physical, occupational, speech, and music therapy services.

Pioneer School

The Pioneer School is where students with disabilities receive specialized instruction from intervention specialists in small size classrooms. Pioneer School students have access to nursing, physical, occupational, speech and music therapy services based on their individualized needs.

Service & Support Administration

Service & Support Administrators (SSAs) provide case management services for individuals in need of service coordination. SSAs complete a person-centered planning process to identify an individual's wants and needs and what is important to the individual. Once identified, SSAs coordinate the needed services and supports. These services may include residential supports, nursing, employment services, transportation, housing, assistance with maintaining benefits, and emergency assistance for health and safety needs.



Health & Respite

Health and respite funds are used to assist families with adaptive equipment, home modifications, therapy services, or other supports needed. Respite care is temporary care provided to a person with a disability because their caregiver is unable to provide care or to provide them a temporary break. Families can access health and respite dollars to do many things such as attend camps, participate in specialized swimming lessons, and receive additional therapies.

Residential Supports

Individuals with developmental disabilities receive support to live in the community as independently as possible. Supports include home modifications, adaptive/assistive equipment, and certified provider assistance with daily living skills such as bathing and personal care, medication administration and household chore assistance. The county board authorizes these services using local supported living funds or assisting the individual to enroll on a Medicaid waiver.



Waiver Administration

The county board assists individuals in accessing a variety of Medicaid waiver programs. These waivers allow individuals to receive supports in the community rather than an institutional setting. The county board authorizes services and pays for approximately 40% of waiver services which are provided by certified individual and agency providers.

Provider Recruitment

In recent years we've been working on creating a robust provider pool of qualified providers to meet the individuals needs through our Medicaid waiver programs. Serving over 300 individuals, our providers work in a variety of settings—weekly drop in, after school services, weekends and homes that require 24 hour support. We are looking into technology to help meet individuals needs, having remote supports that reduces having a staff person in the home while allowing the individual to have increased independence. Using technology to support individuals will allow us to direct in-person providers to the locations that need them most.

Employment Services

Representatives from the county board provide employment navigation support and resources for employers to increase the number of individuals employed in our community.

Adult Day Services

Adult day supports are provided by our agency partners. These supports are provided to encourage participation in community activities, build community membership, develop and maintain meaningful relationships, and offer opportunities for personal growth, independence, and natural supports. Supports are provided based on the needs identified in an individual's service plan. These services are funded by the county board and Medicaid.

PROGRAMS & SERVICES



Advocacy

Ross County advocacy efforts are led by the Capital City Crusaders Advocacy Group. This advocate led group holds monthly meetings, produces newsletters and podcasts and attends regional and state level advocacy meetings. The group meets regularly with business and community leaders to discuss issues facing the DD community and provides input on local and state measures to improve accessibility and inclusion.



Community Outreach

The Community Outreach team works to build relationships with businesses and organizations in Ross County to increase the inclusion and representation of individuals with disabilities in our area. Through volunteer opportunities, hosting inclusive events and participating fully in community groups and activities, the team builds lasting relationships and opportunities that improve and enhance the lives of those we serve.

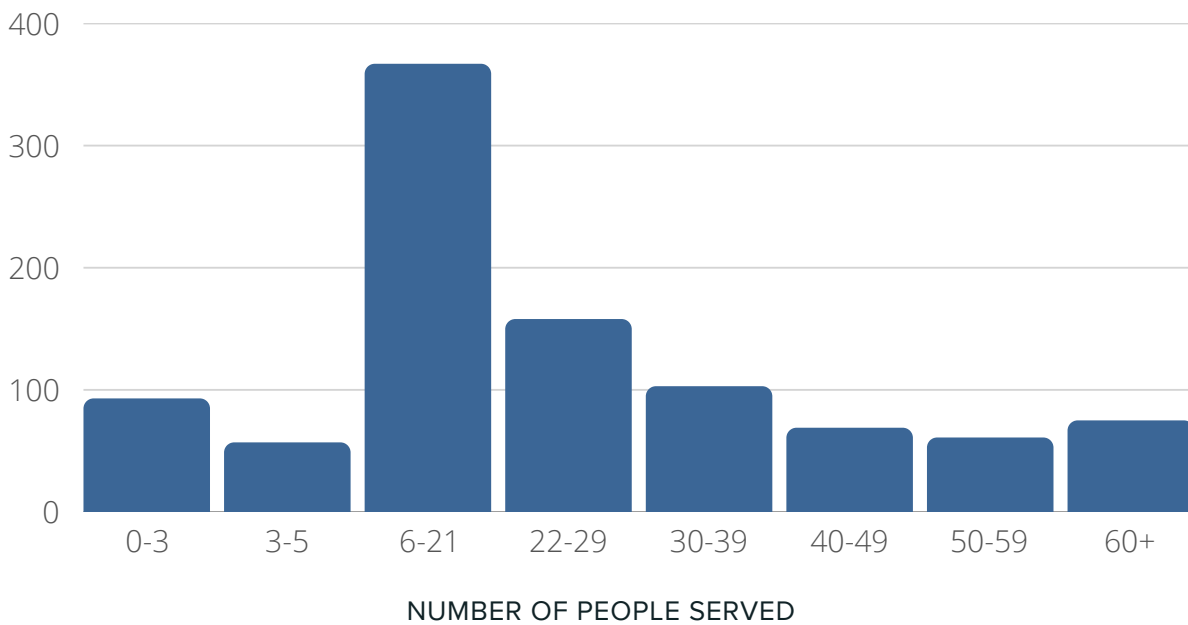
Special Olympics

Ross County Special Olympics is offered to any individual eight years or older in Ross County that has been diagnosed with an intellectual disability. The program became accredited in September of 2022 and has grown to more than 90 athletes competing in ten sports throughout the year. The Trailblazers do not pay to play. Programming is supported through fundraisers, sponsorships and community partnerships.

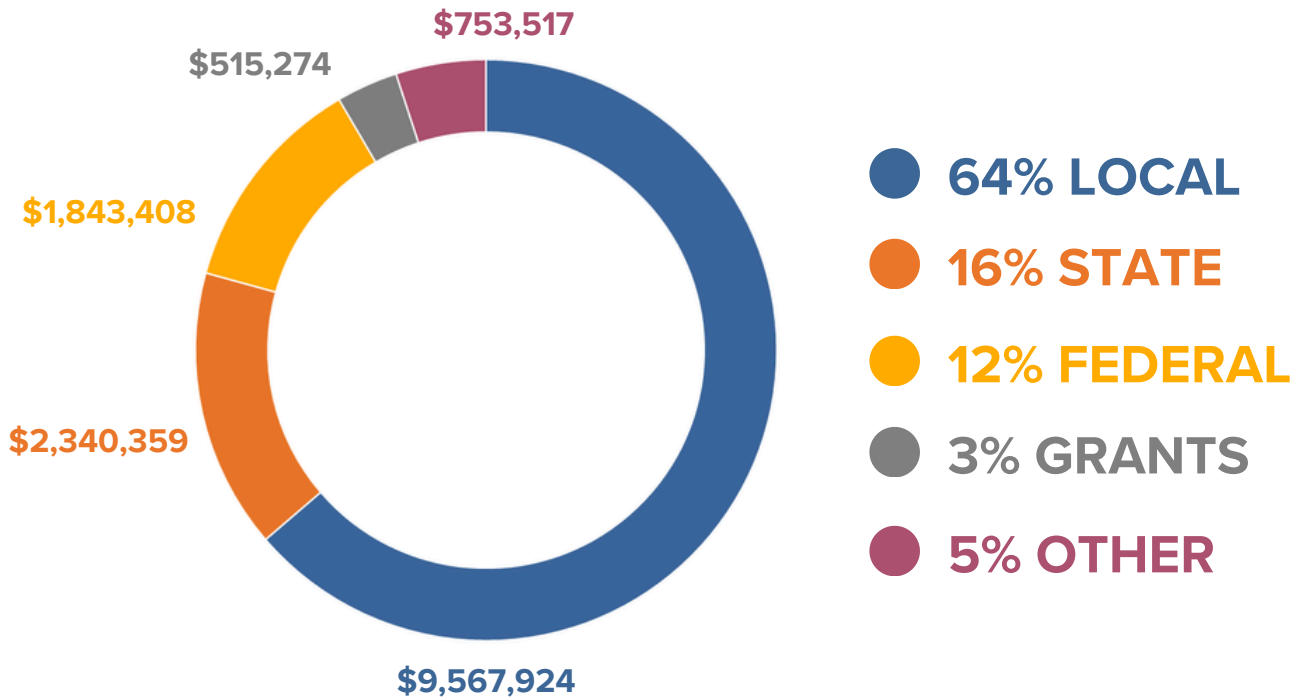


Enrollment Overview

The Ross County Board of Developmental Disabilities currently serves **890** citizens with developmental disabilities.

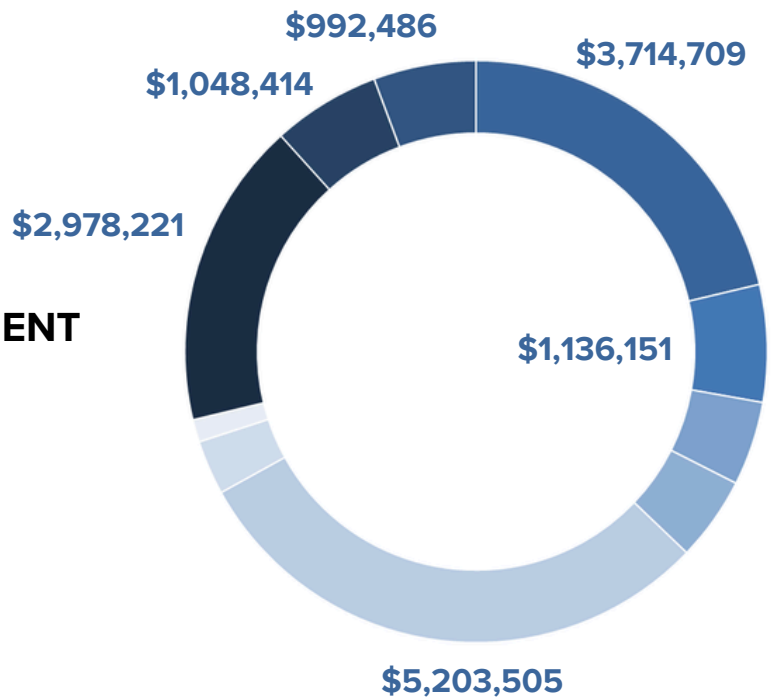


Financial Overview



2024 Revenue

- 37% SCHOOL AGE
- 26% WAIVER SHARE
- 21% SSA
- 8% GRANT EXPENSES
- 7% ADULT & COMM. EMPLOYMENT
- 7% MISCELLANEOUS
- 6% PRESCHOOL
- 6% EARLY INTERVENTION
- 4% COMMUNITY RESIDENTIAL
- 2% HEALTH & RESPITE



2024 Expenditures



Phone Number

740.773.8044



Email Address

info@rossdd.org



Website

www.rossdd.org

the
**PIONEER
CENTER**
Ross County Board of DD

